


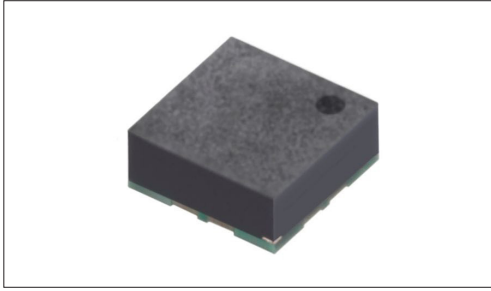
Geomagnetic Sensors

List of Varieties

Series		HSCD
Photo		
Type		Electric compass
Dimensions (mm)		1.55×1.55×0.62 16pin LGA
Operating voltage	AVDD: Drive voltage	+1.6 to +2.0V
	DVDD_io: Drive voltage	+1.14 to AVDD
Operating magnetic field		±2.4mT
Current consumption		369μA typ. (ODR=100 Hz) 19μA typ. (stanby)
Operating temperature range		-40°C to +85°C
Interface		I ² C
Automotive		—

Geomagnetic Type HSCD Series

High azimuth accuracy and low current consumption.



■ Type: Electric compass

Applications: Mobile: Smartphones, tablets, Headsets, wearables
 Energy_Industrial: Robots, drones, Industrial equipment, Converters
 Game: Home handheld consoles, Virtual/augmented reality
 Healthcare: Healthcare equipment, Nursing care equipment, Analysis, test equipment
 Audio_TV: Visual, Audio, Pro audio, Cameras

■ Product List

Products No.	Measurement range	Interface	Operating voltage		Current consumption	Size (mm)	Automotive	Drawing No.
			AVDD: Drive voltage	DVDD_io: Drive voltage				
HSCDTD015A	±2.4mT	I ² C	+1.6 to +2.0V	+1.14 to AVDD	369μA typ. (ODR=100 Hz) 19μA typ. (standby)	1.55×1.55×0.62 16pin LGA	—	1

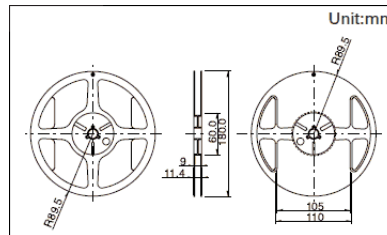
Note

1. This catalog shows only outline specifications. When using the products, please obtain formal specifications for supply.
2. Place your purchase order in N minimum package units (N: integer).
3. Azimuth accuracy (margin of error) may be influenced by environmental conditions and other devices.

■ Packing Specifications

Taping

Number of packages (pcs.)			Tape width (mm)	Export package measurements (mm)
1 reel	1 case / Japan	1 case / export packing		
3,000	3,000	45,000	8	210×210×230



Drawing No. 1

■ Dimensions

